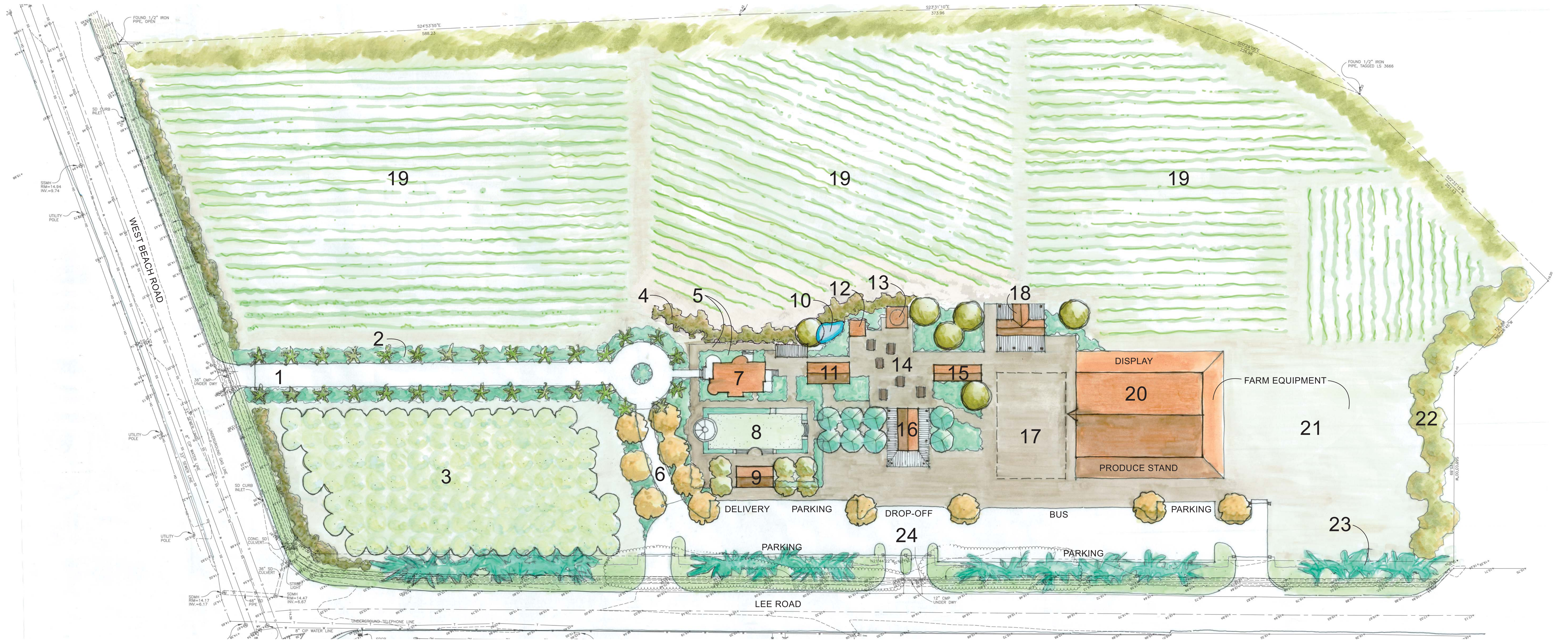


LEGEND

- | | | | |
|--|------------------------------------|--|---------------------------------------|
| 1 FORMAL ENTRY DRIVE & GATES | 8 SUNKEN GARDEN, GAZEBO, & STAGE | 14 NATURE GARDENS, OUTDOOR SPACES, TRAILS & PICNICKING | 19 DEMONSTRATION ORGANIC AGRICULTURE |
| 2 FORMAL ALLEE OF PALM TREES | 9 CARRIAGE HOUSE WITH WINE TASTING | 15 JAPANESE HERITAGE EXHIBIT | 20 DEMONSTRATION & MULTI-USE BARN |
| 3 ORCHARD | 10 POND | 16 VISITOR CENTER | 21 FARM EQUIPMENT & OVERFLOW PARKING |
| 4 BENEFICIAL PLANTING BORDER & DEMONSTRATION | 11 CONSERVATORY | 17 ACTIVITY & DEMONSTRATION AREAS | 22 AGRICULTURAL BUFFER |
| 5 FORMAL GARDENS (SURROUNDING HOUSE) | 12 WINDMILL & WELL HEAD | 18 EDUCATIONAL CENTER | 23 HEDGEROW (NEW & EXISTING) |
| 6 CONTROLLED SERVICE ACCESS (GATED) | 13 WATER TOWER & REST ROOMS | | 24 NEW PUBLIC ENTRY & PARKING (GATED) |
| 7 RESTORED REDMAN HOUSE | | | |



PREPARED BY:
 JONI L. JANECKI & ASSOCIATES, INC.
 515 Swift Street
 Santa Cruz, CA 95060
 (831) 423-6040

REDMAN-HIRAHARA FARMSTEAD MASTER PLAN

Watsonville, California
 June 2007

